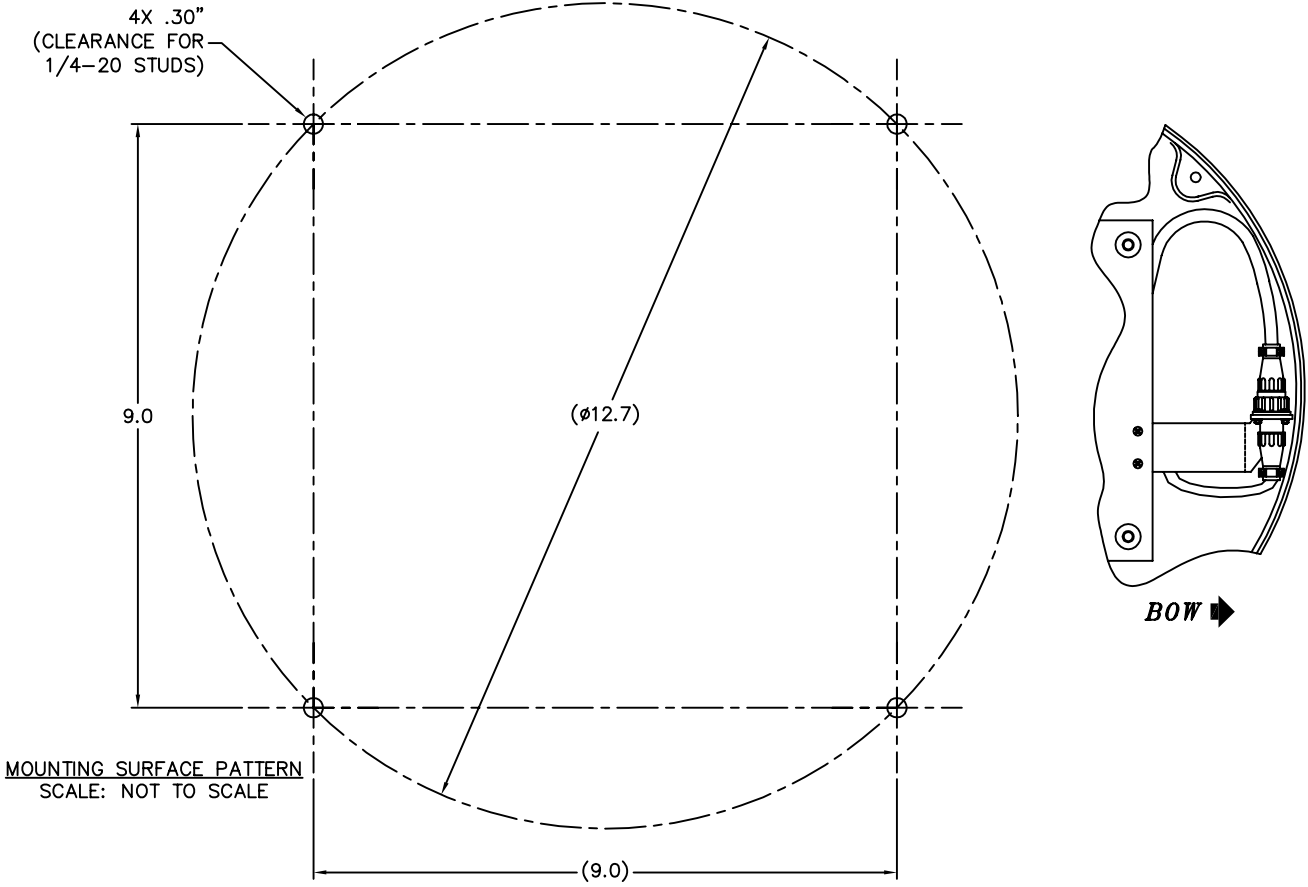
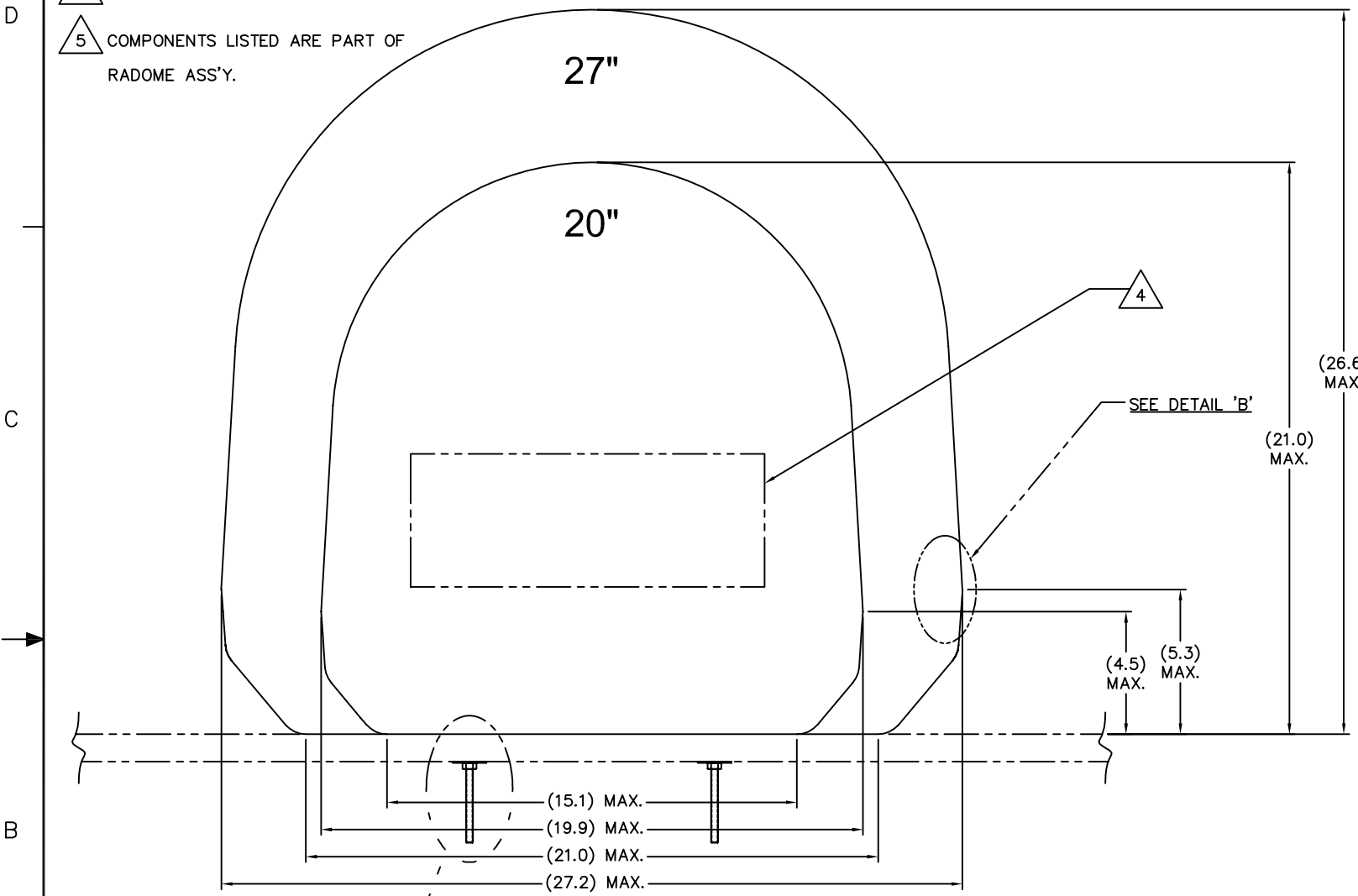


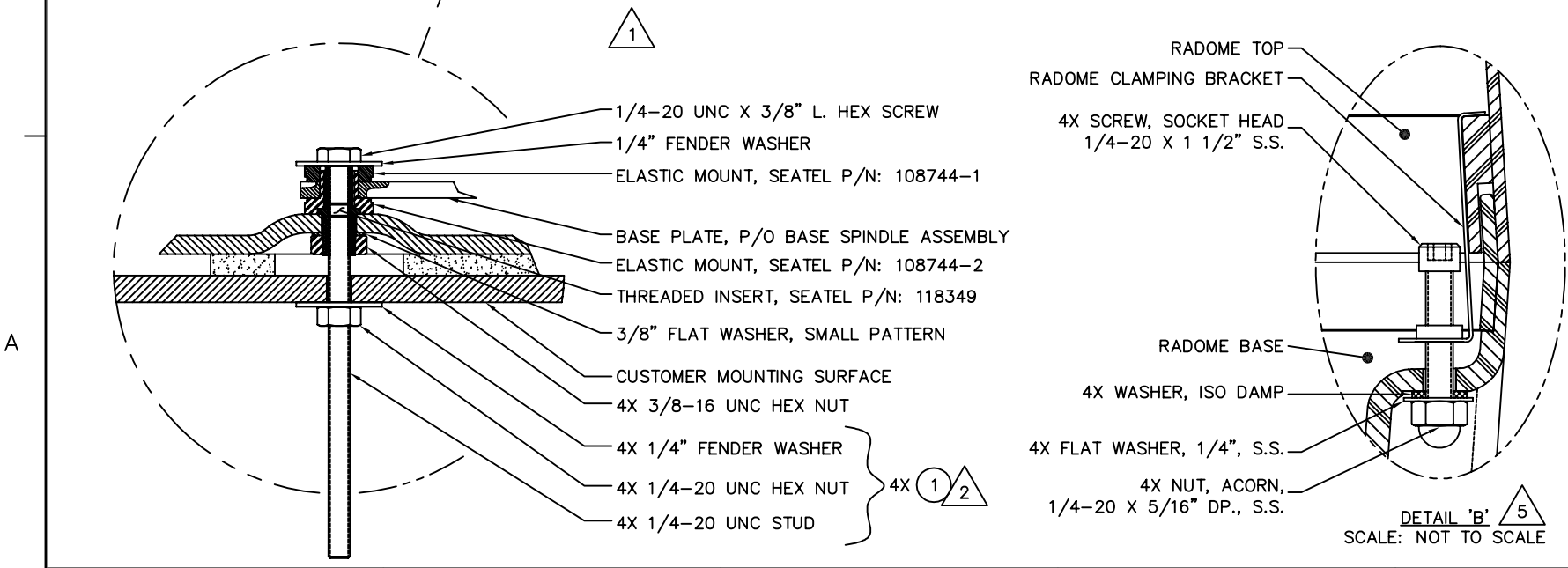
- NOTES: UNLESS OTHERWISE SPECIFIED
 1 MINIMUM DIAMETER OF MAST MOUNTING PLATE
 EQUAL TO RADOME BASE DIAMETER.
 2 HARDWARE SHOWN IS PART OF RADOME
 MOUNTING KIT HARDER P/N: 117426
 3. APPLY ADHESIVE PER SEATEL SPEC. 121730
 4 LOCATE SEATEL DECALS DIRECTLY AFT.
 5 COMPONENTS LISTED ARE PART OF
 RADOME ASS'Y.

REVISION HISTORY				
REV	ECO#	DATE	DESCRIPTION	BY
A1	N/A	11/7/05	BOW REFERENCE MARKER ADDED, ADDED DETAIL VIEW FOR COASTAL 30, ADDED ITEMS 13 - 15 ON COASTAL 30	AEF
			ADDED TERMINATOR, 75 OHM (ITEM 9 & 16)	
A2	N/A	5-18-06	IN NOTE 6 (SHT 2) "B (WHT)" WS "C (GRN)".	RW
B	5702	7-19-07	REMOVE 34" RADOME; UPDATED DWG FOR COASTAL 18 & 24.	NG



- REFERENCE DRAWINGS
 116715 RADOME ASS'Y, 20"
 118302 RADOME ASS'Y, 27"
 121498 RADOME ASS'Y, 34"
 118092 TEMPLATE, RADOME INSTALLATION,
 9-INCH HOLE PATTERN

COASTAL	SYSTEM WEIGHT
18	T.B.D.
20	T.B.D.
24	T.B.D.



TOLERANCES UNLESS OTHERWISE SPECIFIED		DRAWN BY: ALVARO		DRAWN DATE: 08-31-05		APPROVED BY:		APPROVED DATE:		TITLE: G. A. INSTALL COASTAL SERIES	
X.X = ±.050		DRAWN BY:		DRAWN DATE:		APPROVED BY:		APPROVED DATE:		TITLE:	
X.XX = ±.020		DRAWN DATE:		DRAWN DATE:		APPROVED BY:		APPROVED DATE:		TITLE:	
X.XXX = ±.005		APPROVED BY:		DRAWN DATE:		APPROVED BY:		APPROVED DATE:		TITLE:	
ANGLES: ±.5°		APPROVED DATE:		DRAWN DATE:		APPROVED BY:		APPROVED DATE:		TITLE:	
INTERPRET TOLERANCING PER ASME Y14.5M - 1994		APPROVED DATE:		DRAWN DATE:		APPROVED BY:		APPROVED DATE:		TITLE:	
MATERIAL: N/A		APPROVED DATE:		DRAWN DATE:		APPROVED BY:		APPROVED DATE:		TITLE:	
FINISH: N/A		APPROVED DATE:		DRAWN DATE:		APPROVED BY:		APPROVED DATE:		TITLE:	
3rd ANGLE PROJECTION		APPROVED DATE:		DRAWN DATE:		APPROVED BY:		APPROVED DATE:		TITLE:	
SIZE: B		APPROVED DATE:		DRAWN DATE:		APPROVED BY:		APPROVED DATE:		TITLE:	
SCALE: 1:6		APPROVED DATE:		DRAWN DATE:		APPROVED BY:		APPROVED DATE:		TITLE:	
DRAWING NUMBER: 124736		APPROVED DATE:		DRAWN DATE:		APPROVED BY:		APPROVED DATE:		TITLE:	
REV: B		APPROVED DATE:		DRAWN DATE:		APPROVED BY:		APPROVED DATE:		TITLE:	
FIRST USED: COASTAL SERIES		APPROVED DATE:		DRAWN DATE:		APPROVED BY:		APPROVED DATE:		TITLE:	
SHEET NUMBER: 1 OF 2		APPROVED DATE:		DRAWN DATE:		APPROVED BY:		APPROVED DATE:		TITLE:	

8 7 6 5 4 3 2 1

NOTES: UNLESS OTHERWISE SPECIFIED

△ 6 USE ITEM ONLY WHEN CONNECTING TWO RF COAX CABLES. CONNECT TO D (BLU) AND B (WHT).

△ 7 TORQUE TO 35 INCH-LBS.

D

C

B

A

COASTAL 24 SHOWN.

SHIELDED CONTROL CABLE

2X △ 6 19

2 4X

3 4X

4 4X

5 4X

6 4X

SHIELDED CONTROL CABLE

D (BLU) LO-VERT

C (GRN) HI-VERT

B (WHT) LO-HIRIZ

A (RED) HI-HORIZ

ANTENNA CONTROL PANEL
SEE DETAIL 'A' FOR CONTROL
PANEL MOUNTING PATTERN.

D (BLU) LO-VERT

C (GRN) HI-VERT

B (WHT) LO-HIRIZ

A (RED) HI-HORIZ

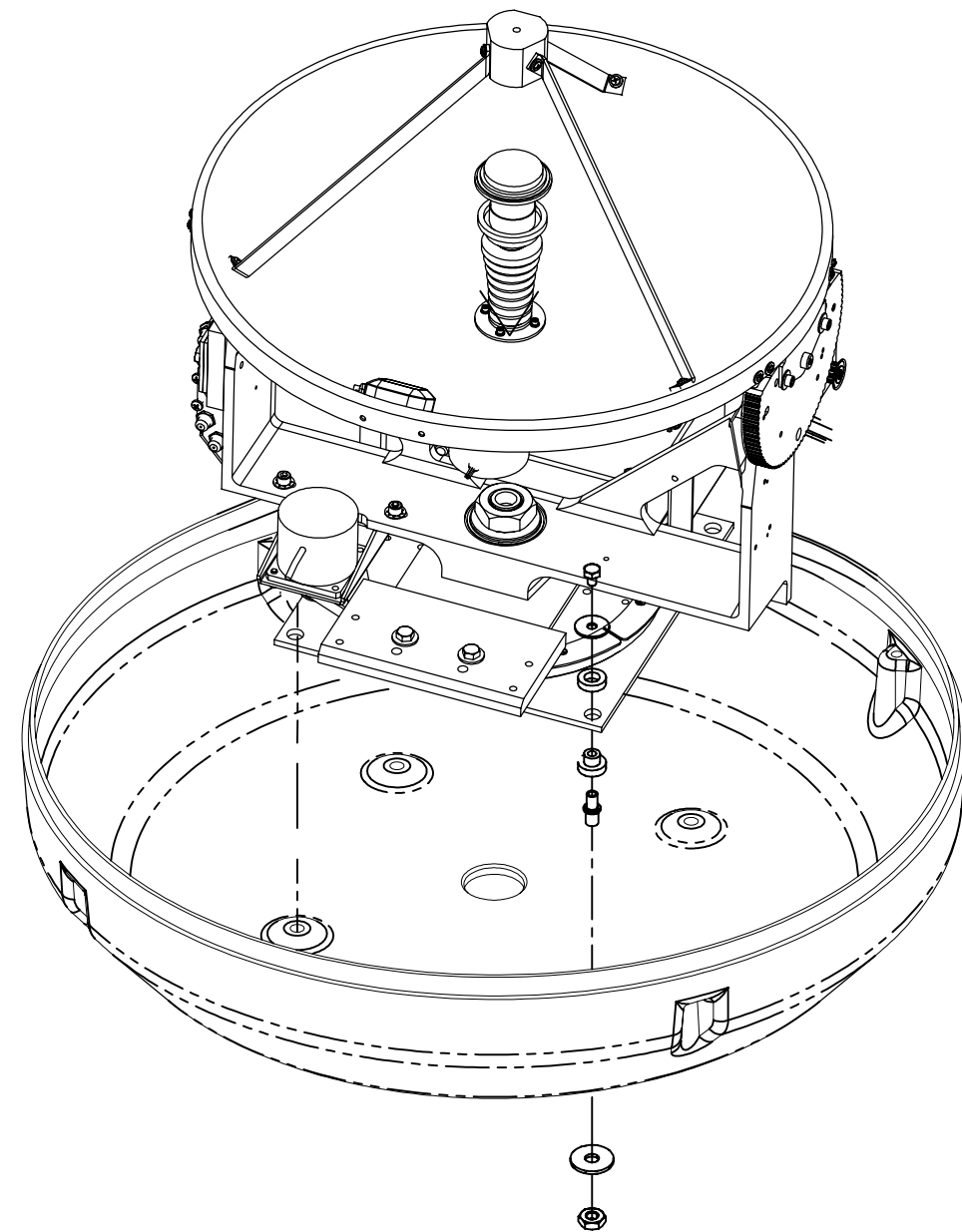
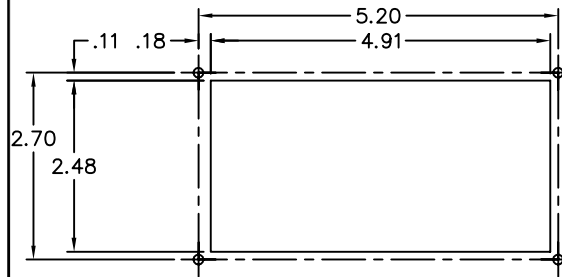
∅.14
(CLEARANCE FOR #6
SHEET METAL SCREW)

7 4X

8 4X

△ 7

DETAIL 'A'
SCALE: NOT TO SCALE



COASTAL 18

SIZE	SCALE:	DRAWING NUMBER:	REV:
B	NOT TO SCALE	124736	B
SHEET NUMBER:			2 OF 2

8 7 6 5 4 3 2 1