

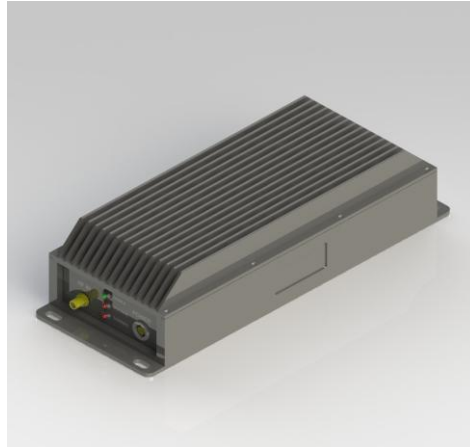
SOLO 1W Vehicle Amplifier

COFDM – Video, Audio Telemetry and IP Products

COBHAM

October 2011 Data Sheet

The most important thing we build is trust



SOLO 1W Vehicle Amplifier

Compatible with SOLO video transmitters

Specification:

Input

RF In	SMA
Power & RF Enable	5 Pin 1B Lemo

Output

RF Out	TNC
--------	-----

RF

Frequency Bands	300 to 700 MHz 3.10 to 3.40 GHz 4.40 to 5.00 GHz 5.70 to 5.90 GHz
Power In	100mW
Power Out	1W
Gain	12dB
Power Ripple	+/- 1dB across band
Output Matching	Matching Circuit immune to open or short

Physical

Dimension	L 263mm, W 100mm, H 64mm *
Weight	1kg

Power

DC Input	9 to 16V Reverse Polarity Protected
Power Consumption	16W typical

Environment

Temperature Range	-10 to +50 deg C
-------------------	------------------

Product Codes:

AMPV1W-030070	Vehicle Power AMP 1W 300-700MHz
AMPV1W-310340	Vehicle Power AMP 1W 3.10-3.40GHz
AMPV1W-440500	Vehicle Power AMP 1W 4.40-5.00GHz
AMPV1W-570590	Vehicle Power AMP 1W 5.70-5.90GHz

Product Code Includes:

CA0001	RS232 cable Lemo-Dsub9 3m
CA0154	Vehicle Amp Power/Control Cable
CA0287	1W / 5W Amp 750mm long RF cable

* Specifications may vary depending on frequency

For further information please contact:

Cobham Tactical Communications and Surveillance

The Cobham Centre – Solent, Fusion 2
1100 Parkway
Solent Business Park
Whiteley
Hampshire, PO15 7AB
England

T: +44 (0)1489 566 750
F: +44 (0)1489 880 538
css.sales@cobham.com

Products are available to security users only, in licensed frequency bands. These products are not approved for use by unlicensed users.

Commercial products are available to unlicensed users - contact Cobham Tactical Communications and Surveillance direct for details.

All product specifications are subject to change without notice. Cobham Tactical Communications and Surveillance will not be liable for technical or editorial errors or omissions.

