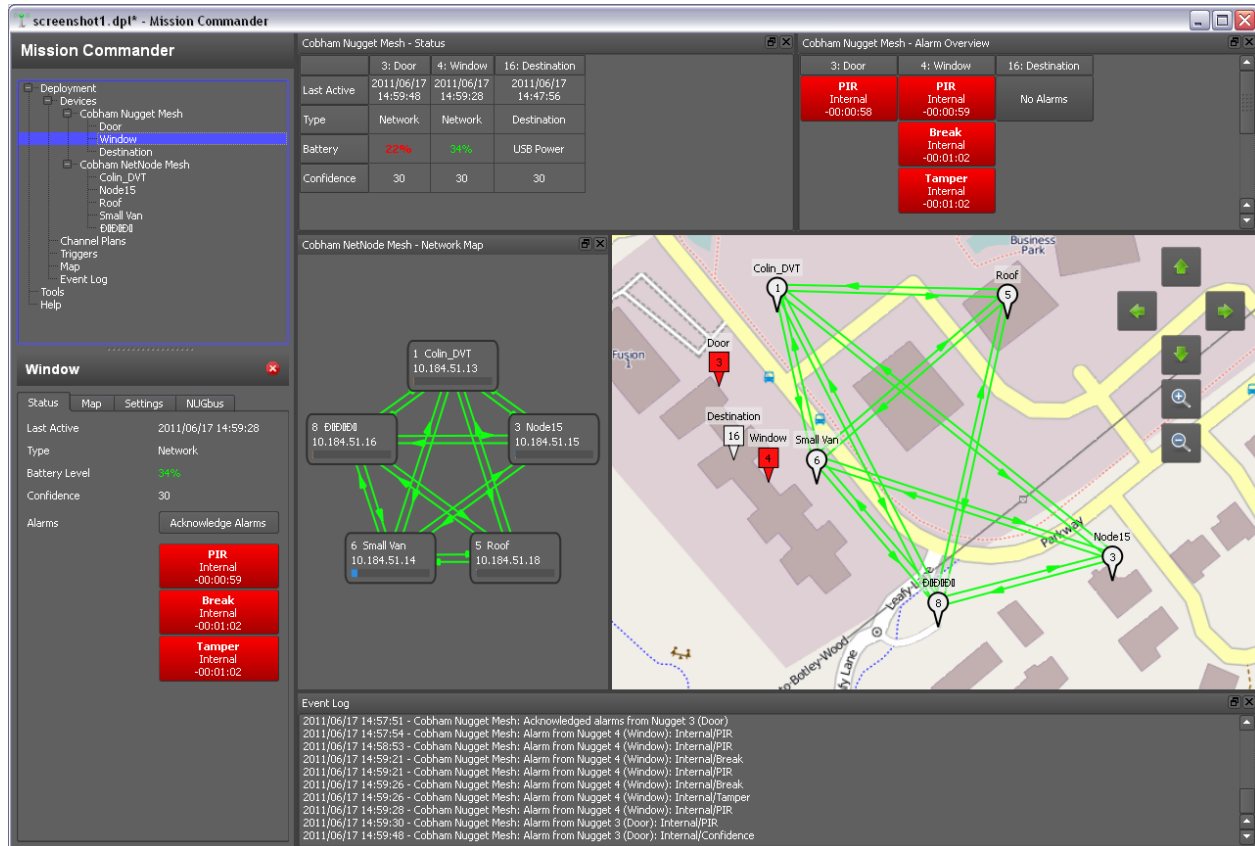


Mission Commander

The most important thing we build is trust



Mission Commander is an advanced software suite that runs on your desktop or tablet computer. It allows manual and automated configuration, management and integration of Cobham video and IP transmission equipments and networked intelligent sensors.

Mission Commander will display and manage the geographical deployment of your equipment, whether deployed for short missions or as part of a citywide surveillance infrastructure. It provides the vital information required to make informed realtime decisions.

The software can configure, monitor and automatically manage IP MESH systems, Nugget ground sensor networks, audio, video and data transmitters, central and tactical receivers, networked video streams and large video walls. It allows an operator to setup automatic actions as responses to trigger events in the sensor network.

Key Features

- Intelligent management of COFDM video and IP transmission systems
- Tactical and strategic deployments
- Works with both online and offline maps
- Advanced sensor event handling
- Integrates with public & private networks
- Automated video wall management *
- Frequency and channel mapping
- Integrates with third-party network tools such as IP cameras and web apps

Short term surveillance

Tactical deployments

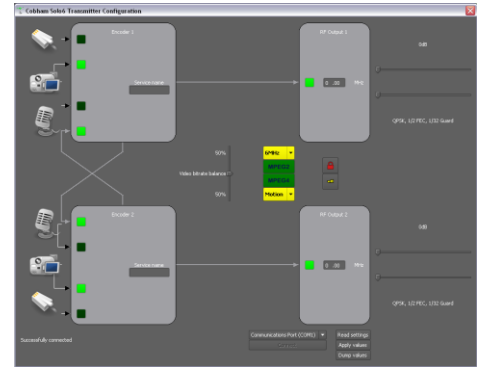
Mobile covert missions

Citywide surveillance infrastructures

Cobham Device Configuration

Mission Commander can be used to configure devices directly connected to the PC via a serial or USB cable. These include the Field Controller (device management tool), SOLO6TX and Nugget destination nodes.

The Field Controller can then in turn be used to program the full range of Cobham devices out in the field. The configuration file for the Field Controller can be reloaded into Mission Commander when working with Receivers and Transmitters in an infrastructure in the Gold level version.

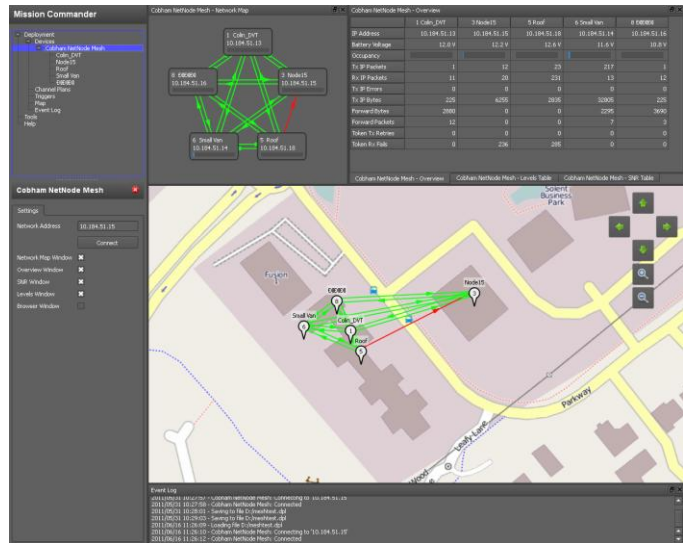


Deployments

The screen layout of Mission Commander and the configured devices, called “Deployments”, can be saved and recalled the next time the software is started.

IP Mesh Systems

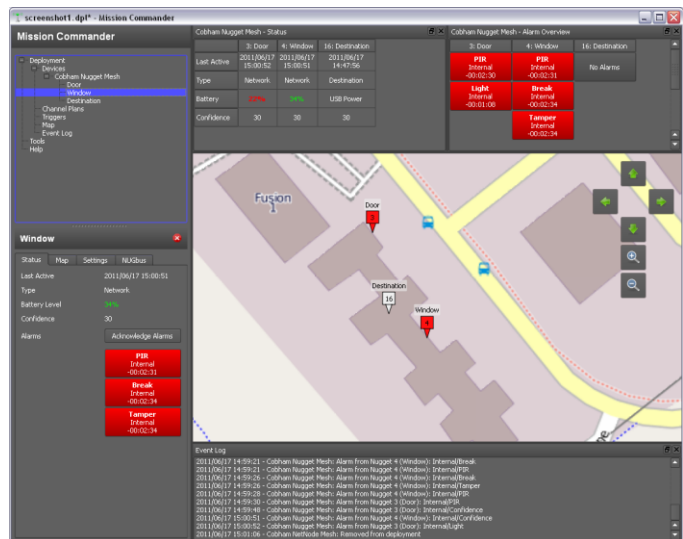
The Cobham IP Mesh can create a local self-healing IP network with up to 12 nodes and transmit up to 5Mbps of data between them. Mission Commander can display the status of and flow of communication between each of the nodes connected to the system. The screen will show easily readable connection and status information including usage statistics and radio link quality.



Networked Unmanned Sensors

Cobham Nuggets are a set of networked unmanned ground sensors with a number of built-in sensors such as break-wire, seismic, PIR and light/dark detection. Additional external sensors can be connected and a Nugget can be setup to switch devices on and off as a response to a trigger event anywhere in the network.

Nuggets are placed on the map either via in-built GPS or manually and will visually indicate the type of trigger events registered. The user can see important information such as battery life and can configure any Nugget in the network.



Streaming IP Video and Audio

Mission Commander can play live IP streams of audio and video either on the PC itself or on a video wall connected to an IP Hardware Decoder. Video streams can originate from any IP enabled COFDM receiver or IP Mesh network and the streams can be reconfigured from within the Mission Commander interface.

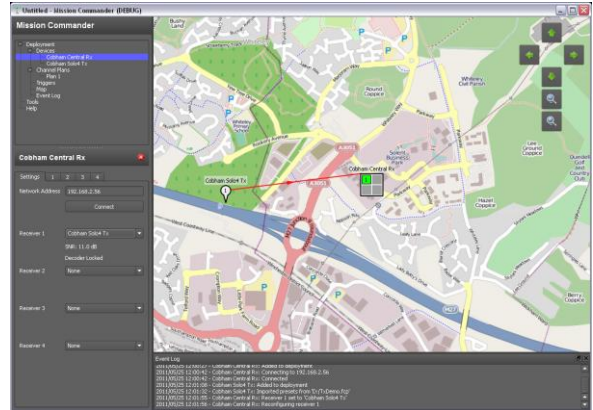
IP Cameras and Web Apps

Any device with a web interface can be integrated within Mission Commander, including IP cameras and web applications such as email or calendars.

COFDM Receivers

Cobham COFDM Receivers can receive audio, video and serial data from any of the COFDM Transmitters. They range from small handheld devices to rack installed central multichannel receivers

IP enabled COFDM Receivers can be shown and managed in Mission Commander. The current status of each of the receiving channels is indicated graphically and can be tuned to any of the configured COFDM Transmitters registered in the system. Managing a large installation of multiple Receivers can be challenging for operators, but Mission Commander can help perform complex tasks more easily. For example, an operator might want to be able to request the output of a specific transmitter on the map onto a specific screen in the OPS Room and Mission Commander will automatically reconfigure the relevant receivers and decoders involved.



COFDM Transmitters

Cobham COFDM Transmitters can transmit audio, video and serial data to any of the COFDM Receivers. If the serial data includes GPS coordinates these can be used to position the Transmitter on the map automatically, otherwise it can be placed manually. If a Telemetry Receiver is connected to the Transmitter the encoding and transmission parameters can be remotely controlled via Mission Commander * and if a PTZ camera is connected it too can be remotely operated.

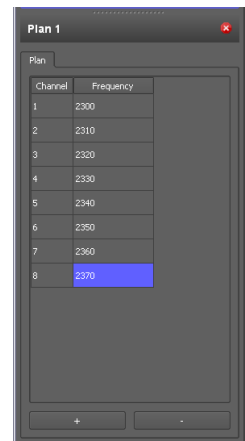
Channel Plans

For large scale deployments involving many central and professional receivers and mobile transmitters, managing frequencies is a growing and complex problem. Mapping frequencies to channels and allowing the software to control how the receivers manage these channels dynamically will allow operators to more easily accomplish this task.

Mission Commander now allows an operator to define and work with named channels rather than having to enter frequencies manually. These names will be shown on the devices on the map.

PTZ and Transmitter Control *

If a Transmitter is connected to a Telemetry link or a 3G sentry like the 3G DropCam any PTZ camera connected can be remotely operated from within Mission Commander. 95% of the PTZ protocols are supported natively. Also, the audio and video encoding and COFDM RF transmission can be remotely configured via Mission Commander.



3G DropCam and Nuggets *

The Cobham 3G DropCam can be controlled via Mission Commander if connected to the public Internet. In addition, snapshot frames can be downloaded from the camera directly without switching on the COFDM transmission and its location will be updated automatically from the built-in GPS receiver.

A receiver Nugget can be connected directly to the 3G DropCam* that will act as if the Nugget is connected directly to the Mission Commander PC. This means that the operator will be able to receive trigger events from the Nugget network and act on this using the same rules as if the Nugget was connected locally.

Mission Commander Versions

Base Level

The base level of Mission Commander includes support for offline configuration of directly connected hardware products, such as SOLO6TX, Field Controller and Nugget Nodes. This version does not include the mapping component and will not manage any devices in a deployment scenario.

Bronze Level

The Bronze level licence includes online and offline maps for managing configuration and deployment of IP Mesh, Nuggets and 3G DropCams. Deployments can be configured on a map and saved for later use. Web based IP cameras and other web-based applications can be integrated and managed alongside the map. The online maps are available when the PC is connected to the Internet and contain most regions on the planet. Offline map files can be provided covering individual small to medium sized countries and larger countries are split up into smaller chunks. One map file is included at the time of purchase and newer or additional maps can be purchased at any time.

Silver Level

The Silver level contains support for viewing streaming video within Mission Commander and advanced trigger management, such as a Nugget trigger turning on a camera. This will also include PTZ control of select cameras via telemetry and/or 3G.

Gold Level

This is the infrastructure level with support for automatic management of CRX, ProRX*, NanoVue* to make sure that transmission feeds from TXs end up on the right IP hardware decoder. COFDM video link quality will be visible and the software can automatically switch* a moving TX to another receiver when signal quality changes. A frequency and channel management tool is also included to help users manage their frequencies more easily.

	Base	Bronze	Silver	Gold
Device Configuration	✓	✓	✓	✓
Deployment		✓	✓	✓
Maps (online and offline)		✓	✓	✓
IP Mesh		✓	✓	✓
Nuggets		✓	✓	✓
PTZ Controller			✓	✓
Video Streaming			✓	✓
Advanced Triggers			✓	✓
Infrastructure				✓
Channel Plans				✓
COFDM SOLO4 RX/TX				✓
IP Hardware Decoder				✓

Product Code

MISCDR	Mission Commander Base Level - for configuration FOC
* MISCDR-B	* Mission Commander Bronze Level
MISCDR-B-LIC	Mission Commander Bronze Level - Additional Licence per Computer
MISCDR-S	Mission Commander Silver Level
MISCDR-S-LIC	Mission Commander Silver Level - Additional Licence per Computer
MISCDR-S-UP	Mission Commander Silver Level - Upgrade from Bronze Level
MISCDR-G	Mission Commander Gold Level
MISCDR-G-LIC	Mission Commander Gold Level - Additional Licence per Computer
MISCDR-G-UP	Mission Commander Gold Level - Upgrade from Silver Level
MISCDR-AES	Mission Commander AES Encryption Support FOC
MISCDR-CMAP	Mission Commander - Custom Regional Map File
MISCDR-MAP	Mission Commander - Additional, or Updated Map File

Computer requirements

Windows XP, Vista or 7, 32 or 64-bit
1024 MB RAM

Products are available to security users only, in licensed frequency bands. These products are not approved for use by unlicensed users.

Commercial products are available to unlicensed users - contact Cobham Tactical Communications and Surveillance direct for details.

All product specifications are subject to change without notice. Cobham Tactical Communications and Surveillance will not be liable for technical or editorial errors or omissions.

For further information please contact:

Cobham Tactical Communications and Surveillance

The Cobham Centre – Solent, Fusion 2
1100 Parkway
Solent Business Park
Whiteley
Hampshire, PO15 7AB
England

T: +44 (0)1489 566 750
F: +44 (0)1489 880 538
css.sales@cobham.com

