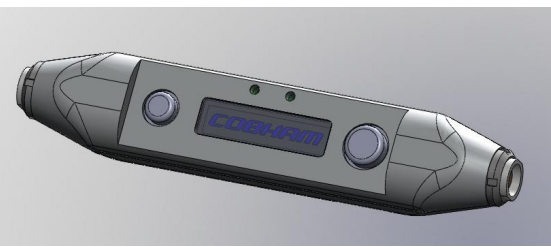


Quick PC Install Guide Field Controller



For detailed technical specifications, further options and technical support, please consult the manual.

1

1x Field Controller




1x CA0343 Control Cable




The Field Controller requires the installation of a driver on the PC before communications can be established. The driver can be found on the Field Controller CD.

2

Connect the control cable to the Field Controller (6 Pin End)




Connect the control cable a USB port on the computer



Insert CD

3

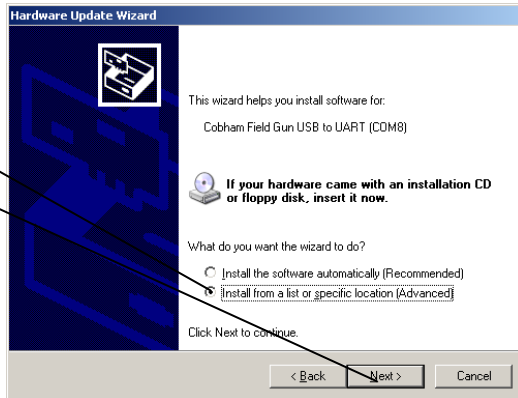
Plugging the Field Controller into a PC USB port for the first time will start the windows hardware update wizard.



Select 'No, not this time' and click 'Next'

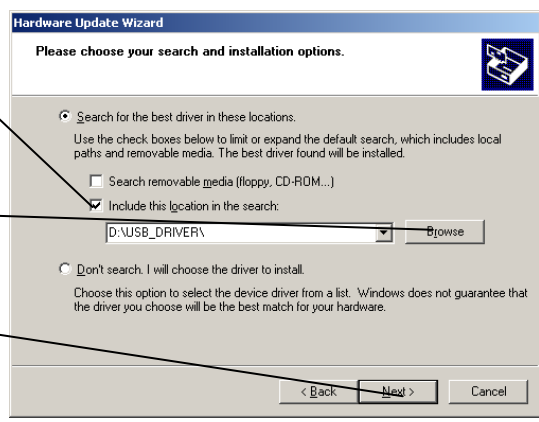
4

Select 'Install from a list or specific location' and click 'Next'



5

Select 'Include this location in the search' in the search'

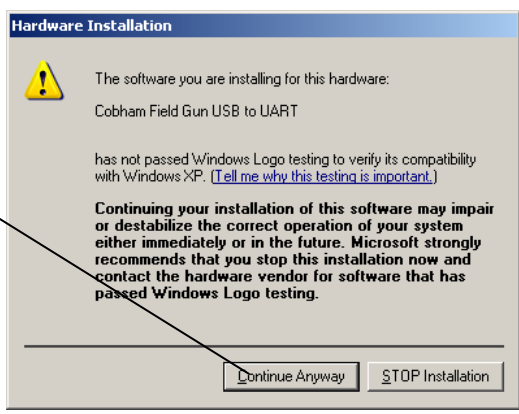


Click 'Browse' and locate the 'USB_DRIVER' directory on the CD

Click 'Next'

6

Windows will pop up a message declaring that the driver has not been verified. Click 'Continue Anyway'.



Finally click 'Finish' to end the driver installation. The Field Controller and PC are now ready to go.