

15 dBi, 8.1 – 8.5 GHz Broadband Patch Antenna

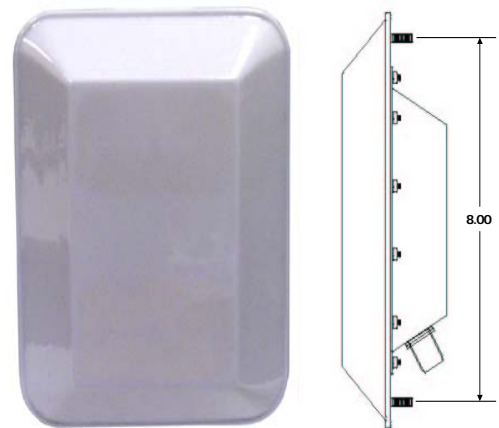
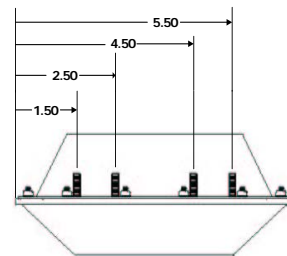
COBHAM

The most important thing we build is trust.

This antenna is a precision 15 dBi Broadband Patch that covers 8.1 to 8.5 GHz in a sealed, weatherproof radome. It outputs RF directly after passing through an internal Low Noise Amplifier. Model #: MAPX5V15056XX4 outputs RF directly thru a 50 Ohm Type N-FM Connector. This antenna is designed for broadband receivers and transmitters where wide bandwidth and high efficiency are key system parameters.

GMS also supplies this Antenna in a 360 Deg Array configuration for tracking applications with the Messenger Smart Receiver (MSR). Please Refer to the Messenger Antenna Array data sheet Document #; 100-DS0375X.**

A pole-mount adapter kit is also available.



Physical (Mounting Dimensions in Inches)
Vertical Orientation Shown

15 dB, 8.1 – 8.5 GHz Broadband Patch Antenna

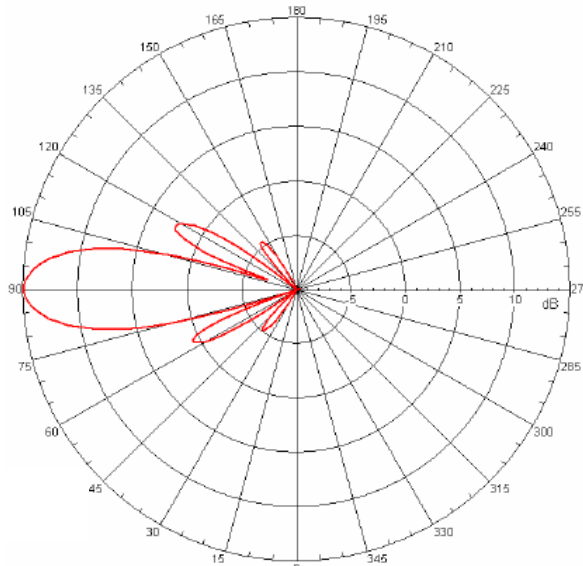


Electrical Specifications:

Frequency:*	8.1 – 8.5 GHz
Polarization:	Linear
Ant Gain: **	15 dBi @ 8.3 GHz
HPBW:	Vert: 19.5°, Horiz: 55.8° @ 8.3 GHz
LNA Gain	~17 dB
LNA NF	3.5 dB
Z / VSWR:	MAPX5V15056XX4,50 Ohms / <= 1.5: 1
Power:*	50 Watt (Max)

Mechanical Specifications:

Weight:*	24 oz. (0.6804 kg)
Dimensions: (L x W x D)	10.18" x 7.18" x 2.87" 25.86 cm x 18.24 cm x 7.29 cm
Construction:	Polycarbonate Radome Aluminum Ground Plane
Mounting:	8 each 10-32 Studs
Rating:	Outdoor, Fixed or Mobile



Elevation Pattern

* Antenna only
** get replaced with the actual numbers.