

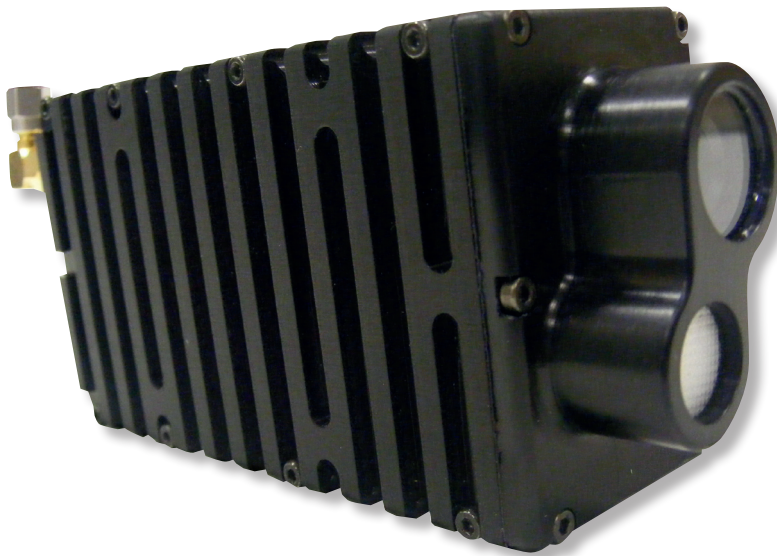
SOLO4 - DropCam Camera/Transmitter

COFDM - Video, Audio Telemetry and IP Products

COBHAM

September 2010 Data Sheet

The most important thing we build is trust



The SOLO4 DropCam Transmitter is an integrated rapid deployment wireless video surveillance solution, integrating camera, microphone, user data, battery and digital COFDM transmitter into a single rugged housing. The DropCam is ideal for rapid deployment surveillance scenarios such as event or room monitoring or fire and safety applications. The COFDM modulator ensures excellent range even in mobile and non-line of sight applications (typically 300–500m). The DropCam is available in a range of frequency bands from 300MHz to 6GHz and is supplied with interchangeable lenses (3mm, 8mm and 16mm) to suit all applications.

The rugged but lightweight IP66 chassis enables the unit to be used in prolonged outdoor deployments, while tripod mount and magnetic mount fittings enable the SOLO4 DropCam Transmitter to be positioned easily.

The Transmitter can be mounted on standard baton-style torches such as the Maglite by employing the optional DropCam Torch Clip Mount, creating an ideal solution for first responder and emergency services workers.

The re-chargeable integral battery can power the unit for 3 hours of continuous transmissions. For longer deployments the DropCam is supplied with an external DC input.

Privacy is ensured with built-in 32-bit ABS encryption or, for greater security, AES128- or 256-bit encryption can also be provided, subject to export controls.

The SOLO4 DropCam is supplied in kit form with the following accessories:

Accessories supplied:

1 x rugged carry case with operator instructions

1 x Control and DC cable

1 x AC to DC adaptors

1 x 8mm lens (blue band)

1 x 16mm lens (red band)

1 x right angle magnetic clip

1 x 2dBi Omni antenna

1 x tools for lens replacement

The DropCam can be mounted on standard baton style torches such as the Maglite by employing the optional DropCam Torch Clip Mount, creating an ideal solution for first responder and emergency services workers.

Product Code:

TORCP – Torch Clip bracket for DropCam

Accessories supplied with Torch Clip

1 x Torch Clip

1 x screw for tripod mount

1 x Allen key

SOLO4 - Drop Cam Camera/Transmitter

COBHAM

COFDM - Video, Audio Telemetry and IP Products
September 2010 Data Sheet

Specification:

Camera

Type	¼" CMOS Fixed Focal 3.4mm (56deg H-FOV), F2.0
Interchangeable Lenses	8mm and 16mm
Pixels	640*480
Resolution	>460 TVL
Sensitivity	0.05Lux
Signal to noise	>46dB

Microphone

Type	Microphone Omni 50-13KHz
Sensitivity	60dB +/-3dB

Output

RF Output	SMA
Antenna Type	2dBi Vertical Polarisation Omni Flexi antenna

RF

Frequency Bands	2.00 to 2.5GHz, 1.0 to 1.5GHz (supplied antenna 1.2 to 1.5GHz), 300 to 450MHz
Power	100mW
Power Control	30dB in 1dB steps
Tuning Steps	250KHz

Modulation

Bandwidth	8/7/6/2.5MHz
FEC	1/2, 2/3, 3/4, 5/6 (bandwidth dependent)
Modulation	QPSK, 16QAM and 64QAM (bandwidth dependent)

Video

Line Standard	PAL (P variant), NTSC (N variant)
Resolution	704, 528, 480, 352
Coding Mode	MPEG2
Delay	Less than 50 - 250ms (mode dependent)

Audio Encoding

Sample Rate	32/48KHz
Format	MPEG2 Audio 384Kb/s to 64Kb/s mono

Encryption

Format	ABS 32-bit as standard AES128/256 (optional)
--------	---

Remote Control

RS232 Control from PC GUI Application

Products are available to security users only, in licensed frequency bands. These products are not approved for use by unlicensed users.

Commercial products are available to unlicensed users – contact Cobham Surveillance direct for details.

All product specifications are subject to change without notice. Cobham Surveillance will not be liable for technical or editorial errors or omissions.

Data Input

RS232 1K2 to 115K6 User data input

External DC input

6 – 16V (internal battery charges with >12.5V only)

Trigger Input

Close contact input pins for 'wake-up' and 'sleep'
--

Battery

Voltage	7.5V
Capacity	2200mA/h
Duration	Typically 3 hours plus

Physical

Dimension	L 110mm, H 55mm, W 37mm
Weight	340g
Power Consumption	4.8 to 5W depending on mode

Environment

Temperature Range	-10 to +60 deg C
Enclosure	IP66

Control and DC Connector - 7pin Binder 712 Series PN. 99 0422 0007

Pin 1. Vin
Pin 2. Gnd
Pin 3. 232 Control Out of Unit
Pin 4. 232 Control Into Unit
Pin 5. 232 User Data In
Pin 6. Close Contact 1
Pin 7. Close Contact 2

Product Code:

SOL4DCAM-N-030045	Drop Camera NTSC 300-450MHz
SOL4DCAM-N-120150	Drop Camera NTSC 1.20-1.50GHz
SOL4DCAM-N-200250	Drop Camera NTSC 2.00-2.50GHz
SOL4DCAM-P-030045	Drop Camera PAL 300-450MHz
SOL4DCAM-P-120150	Drop Camera PAL 1.20-1.50GHz
SOL4DCAM-P-200250	Drop Camera PAL 2.00-2.50GHz
TORCP	Torch Clip Bracket for Drop Camera

For further information please contact:

Cobham Surveillance

Domo Products
11 Manor Court, Barnes Wallis Road,
Segensworth, Hampshire, PO15 5TH,
England

T: +44 (0)1489 566 750

F: +44 (0)1489 880 538

domo.sales@cobham.com

