

MALI-007213-000000

C-Band Waveguide Limiter

COBHAM

2010 Data Sheet v2

The most important thing we build is trust

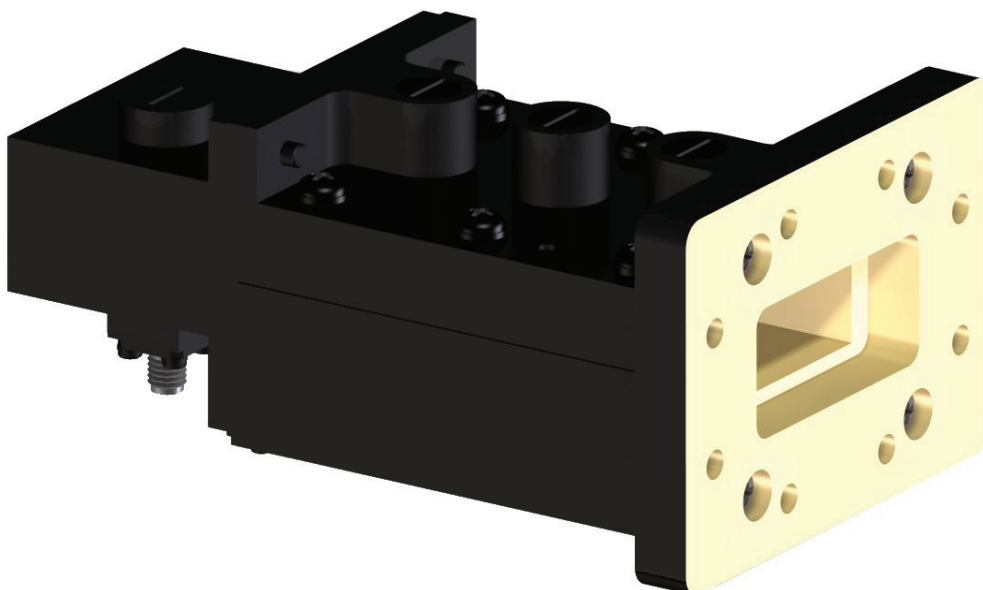
Description

This C-Band waveguide limiter provides excellent protection from unwanted signals. It features an SMA output connector for ease of system integration.

Features

- High Reliability
- High power handling
- Low insertion loss
- SMA Output
- European Manufacture.

Graphical Representation



MALI-007213-000000

C-Band Waveguide Limiter

2010 Data Sheet v2



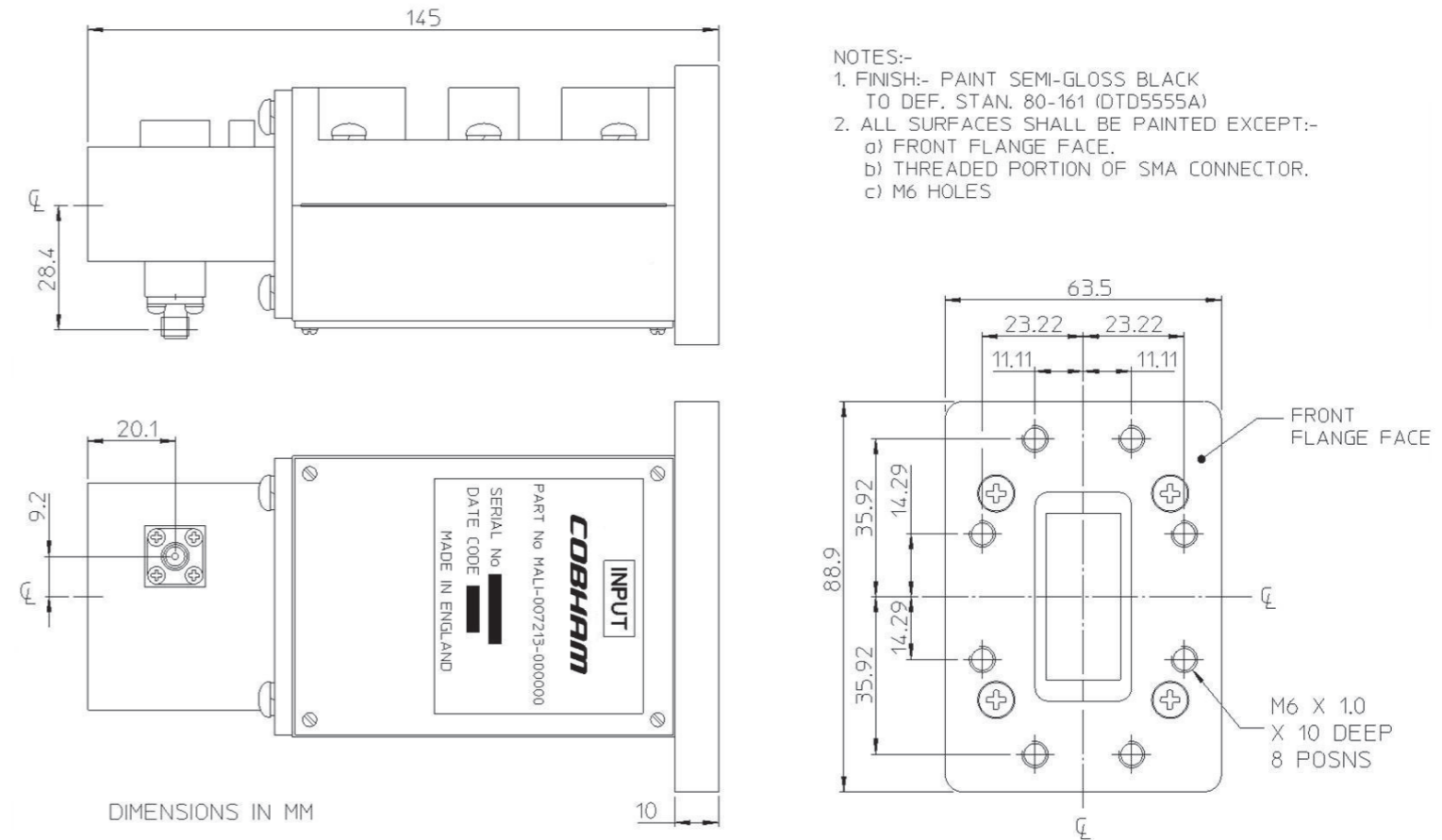
RF Performance

Parameter	Value			Units
	Min.	typ.	Max.	
Frequency Band	5.2		5.8	GHz
Insertion Loss (Input power <= -10 dBm)			0.6	dB
Input / Output Return Loss (Input power <= -10 dBm)			1.38:1	Ratio
Normal Operating)	Peak Power		1200	W
	Mean Power		30	W
	Pulse width		15	µs
	Duty Cycle	40:1		Ratio
Flat Leakage			50	mW
Spike Leakage (RF rise time >= 15 ns)			500	mW

(Applies over the frequency range, output load impedance of 50 ohms, input characteristic impedance of stated waveguide. Unless otherwise stated limits & conditions are indicated values.)

Environmental	
Operating Temperature	-30°C to +70°C
Storage Temperature	-55°C to +90°C
RF Connections	
Input (Flange As drawing)	WG12
Output	SMA Female

Mechanical Outline



- NOTES:-
1. FINISH:- PAINT SEMI-GLOSS BLACK TO DEF. STAN. 80-161 (DTD5555A)
 2. ALL SURFACES SHALL BE PAINTED EXCEPT:-
 - a) FRONT FLANGE FACE.
 - b) THREADED PORTION OF SMA CONNECTOR.
 - c) M6 HOLES

DIMENSIONS IN MM

TOLERANCE UNLESS STATED
 X. ± 0.5
 X.X ± 0.2
 X.XX ± 0.1

RECEIVER PROTECTOR
 MALI-007213-000000 - OUTLINE



For further information please contact:

Cobham Sensor Systems

Featherstone Road

Wolverton Mill

Milton Keynes, MK12 5EW

England

Tel: +44 (0) 1908 574200

Fax: +44 (0) 1908 574300

E-mail - cobham.mal@cobham.com